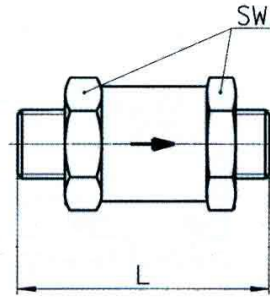
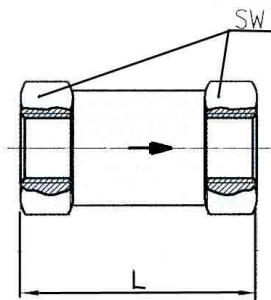
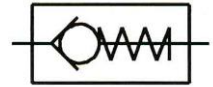
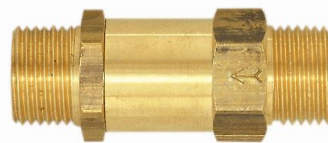


Body Brass  
Seal FKM  
Installation position / flow direction any \* / note arrow (\* preferably horizontal installation)

**Important** The check valves, straight form, are not suitable as control valves for piston compressors



227.03

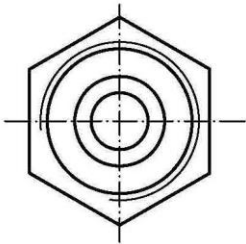
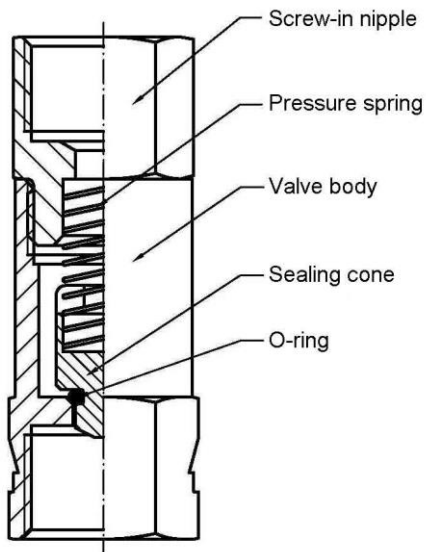


227.12

## Unidirectional valve

Art. No.	Type No.	Thread	a/f mm	Length mm	Thread length mm	Opening pressure min. bar	Operating pressure max. bar	Operating temperature min. / max. °C	Medium temperature min. / max. °C	Flow values m <sup>3</sup> /h
103815	227.01	G 1/4 IT	19	53.0	-	0.2 – 0.4	40	-	-18 / 160	ca. 50
103816	227.02	G 3/8 IT	19	54.0	-	0.2 – 0.4	40	-	-18 / 160	ca. 50
103817	227.03	G 1/2 IT	24	63.0	-	0.2 – 0.4	40	-	-18 / 160	ca. 100
103818	227.04	G 3/4 IT	36	58.0	-	0.1	16	-10 / 180	-	ca. 190
103819	227.05	G 1 IT	46	68.5	-	0.1	16	-10 / 180	-	ca. 340
103820	227.10	G 1/4 ET	19	53.5	11.0	0.2 – 0.4	40	-	-18 / 160	ca. 55
103821	227.11	G 3/8 ET	19	54.0	11.0	0.2 – 0.4	40	-	-18 / 160	ca. 55
103822	227.12	G 1/2 ET	24	66.0	13.5	0.2 – 0.4	40	-	-18 / 160	ca. 100
103823	227.13	G 3/4 ET	36	77.0	14.0	0.1	16	-10 / 180	-	ca. 190
103824	227.14	G 1/ ET	46	84.0	15.0	0.1	16	-10 / 180	-	ca. 340

Nominal flow [m<sup>3</sup>/h] at P = 6 bar and Δp = 1 bar



**Strainer for check valves, with plastic thread**

Art. No.	Type No.	Thread	Mesh size	Suitable for check valve Art. No.
134045	SKR-38-K	G 3/8	1.2	103816
134046	SKR-12-K	G 1/2	1.2	103817
134047	SKR-34-K	G 3/4	1.2	103818
134048	SKR-1-K	G 1	1.2	103819



SKR-1-K